



BEER DISPENSER

Model SBC570B



Instruction Manual

BEFORE USE, PLEASE READ AND FOLLOW ALL SAFETY RULES AND OPERATING INSTRUCTIONS.

Write Serial No. (from back of unit) here:

Felix Storch, Inc.
770 Garrison Avenue
Bronx, NY 10474
www.summitappliance.com

IMPORTANT SAFEGUARDS



IMPORTANT – All persons who will operate this equipment must read and become thoroughly familiar with all operating procedures and safety precautions. Misuse of this equipment may result in personal injury, death, or property damage.

1. You will need this manual for the safety warnings and precautions, operating, inspection, maintenance and cleaning procedures, parts list and assembly diagram. Record the Serial Number (from the back of the unit) on the cover of this manual. **Keep the manual in a safe and dry place for future reference.**
2. The warnings, cautions and instructions discussed in this manual cannot cover all possible conditions and situations that may occur. It must be understood by the operator that common sense and caution are factors that cannot be built into this product but must be supplied by the operator.
3. Never use this product for anything but its intended use. Never modify this product. Failure to comply with the precautions, warnings and recommendations in this manual will nullify your warranty and may result in injury or even death.
4. Always insure that this beer dispenser is plugged into a grounded outlet with the proper power supply available.
5. Do not unplug the machine by pulling or tugging on the power cord. Firmly grasp the plug and remove from the outlet.
6. Make sure the power outlet, plug and power cords are in good condition. Worn, frayed or damaged plugs, cords and outlets should be replaced or repaired by a certified electrician who is properly qualified to meet local safety and electrical codes. Power supply cords should be replaced by the manufacturer.
Avoid using extension cords or 3-prong adaptors.
7. To reduce the risk of electrical shock or fire, make sure your unit is properly grounded. *Never tamper with, remove or cut the grounding pin!* The wall outlet used with this beer dispenser **MUST** be properly grounded. If you do not have a grounded outlet, have one installed by a certified electrician who is properly qualified to meet local safety and electrical codes.
8. Make sure your machine is unplugged when you conduct any maintenance or repair. A qualified service technician should always perform service or repair.
9. This product is not intended for commercial use.
10. Do not cover the power cord. Do not immerse cord in water or use in high traffic areas. Do not run cord over carpets or heating sources or elements. Never use the appliance with damaged cords or plugs.
11. **This product is intended for upright, free-standing use only.** Do not install in a cabinet or enclosed space.
12. Do not operate with missing or broken parts.
13. **This product is intended for indoor use only.** Do not use outdoors.
14. Only qualified repair personnel should perform generator service. Service or maintenance performed by unqualified personnel could result in injury.
15. Do not operate this beer dispenser in explosive atmospheres, such as in the presence of flammable liquids, gases or dust.
16. Do not tamper with or modify the controls.
17. Do not roll a loaded beer dispenser over carpeting. Make sure your unit is empty before moving it.

18. KEEP UNIT UPRIGHT when transporting. Do not allow to tilt past 45 degrees. Do not upend or turn upside down.
19. WARNING! Children must be supervised around this machine. Make sure that children know that this beer dispenser is NOT A TOY. Close door during operation and leave closed at all times when children are present.

WARNING: EXTENSION CORDS

Because of inherent dangers from faulty or inferior cords, avoid the use of extension cords. When you cannot avoid their use, be sure that the cord is a 3-wire cord with a 3-prong grounded plug. The cord should be rated for AT LEAST 1875 watts and a No. 14 AWG minimum size.

DANGER: RISK OF CHILD ENTRAPMENT

If you are disposing of this machine, we recommend that you remove the door but leave the shelves in place to reduce the risk of injury to children. DO NOT ALLOW CHILDREN TO BECOME TRAPPED.

ALWAYS supervise children when using this product when they are present. At all times be sure that children are not playing with the unit.

LOCATION RECOMMENDATIONS

1. INDOOR USE ONLY. DO NOT ATTEMPT TO USE OUTDOORS.
2. INTENDED FOR UPRIGHT, FREE-STANDING USE ONLY. Do not install in cabinet or enclosed space.
3. Get the most out of your beer dispenser! To maximize efficiency and long life, use near a proper electrical outlet and ensure that there is adequate ventilation and clearance around the unit. Allow at least 5 inches clearance around all sides of the beer dispenser.
Dimensions: 21.3"W x 26.6"D x 33.2"H (with casters)
4. Avoid locations where this unit will be in contact with heating elements or direct sunlight.

CO₂ SAFETY PRECAUTIONS, WARNINGS & DANGER NOTICES

1. **DANGER!** Carbon dioxide is a potentially dangerous gas. Canisters or cylinders are under pressure and proper handling is essential for safety. Familiarize yourself with canister installation and replacement before operating this unit. HANDLE WITH CARE. Never jostle, toss or treat cylinders roughly. If you experience headache or difficulty breathing, a leak may be occurring; open windows and doors to ventilate the area and leave immediately.
2. INTENDED FOR UPRIGHT, FREE-STANDING USE ONLY. Do not install in cabinet or enclosed spaces.
3. Store CO₂ cylinders away from heat or explosive gases. Keep in a cool, dry space (lower than 70°F) and chain canisters upright to avoid tipping or knocking. Always wear gloves and safety glasses when around chemicals.
4. Review and follow instructions for changing CO₂ cylinders. NEVER CONNECT A CO₂ CANISTER DIRECTLY TO THE UNIT. To avoid potential explosion that could result in grave injury or even death, ALWAYS CONNECT THE CANISTER TO THE CO₂ REGULATOR. There are two safety valves, located separately. One is in the regulator and one on the CO₂ canister. DO NOT REMOVE VALVES, AND DO NOT EXCEED 60 PSI.
5. DO NOT ATTEMPT TO REFILL CO₂ CANISTERS! Refills are available where most canisters are sold (see page 6 for more information).

TABLE OF CONTENTS

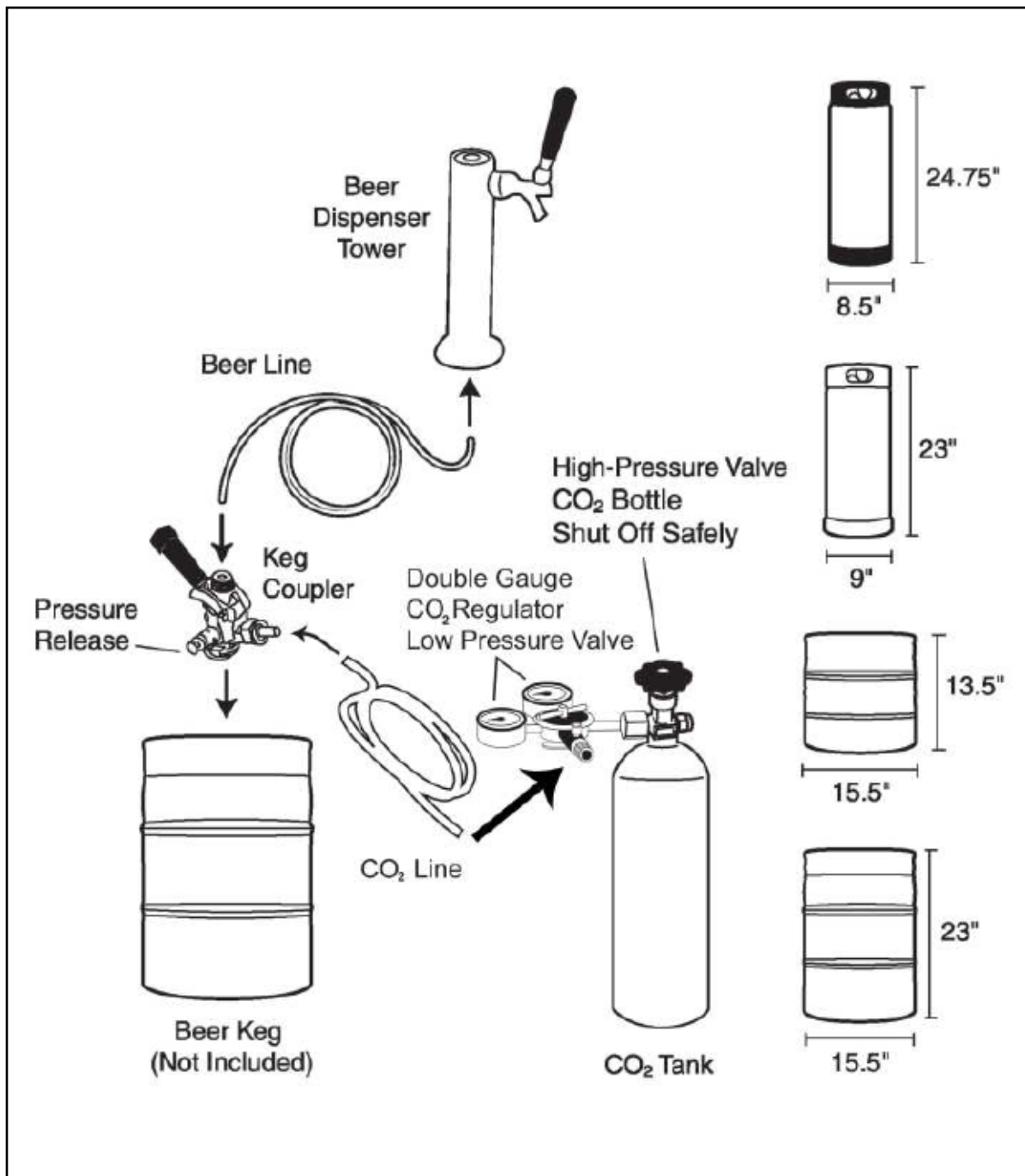
<i>Important Safeguards</i>	1-2
<i>Technical Information</i>	3
<i>Beer Dispenser Flow and Parts</i>	4
<i>Beer Dispenser Assembly</i>	5-7
<i>Caster Assembly</i>	5
<i>Guardrail Assembly</i>	5
<i>Beer Tap Installation</i>	5
<i>CO₂ Regulator Installation</i>	6
<i>CO₂ Regulator & Tap Connection Examples</i>	7
<i>How to Tap a Beer Keg</i>	8
<i>Operation, Maintenance & Storage</i>	9
<i>Accessories (Parts List)</i>	10
<i>Limited Warranty</i>	11

TECHNICAL INFORMATION

Model:	SBC570B
Capacity:	6.0 cubic feet
Electrical Input:	115VAC ~ 60Hz
Rated Current:	1.9A
High Side Pressure:	300psi
Low Side Pressure:	88psi
Refrigerant:	R134a, 2.82 oz.
Net Weight:	88.2 lbs
Unit Dimensions:	21.3"W x 26.6"D x 33.2"H (with casters but without beer dispenser tower)

BEER DISPENSER FLOW AND PARTS

SAVE THESE INSTRUCTIONS



BEER DISPENSER ASSEMBLY

Be sure you have a thorough familiarity with the assembly and installation process before turning on your beer dispenser.

NOTE: Once casters are assembled, place your unit in an upright position and allow it to sit for at least 8-10 hours before plugging into an outlet. This will allow the refrigerant to settle before operation.

CASTER ASSEMBLY

1. Remove everything from the cabinet and lay the unit on a clean, dry and padded surface.
2. Install casters into holes on bottom of unit as shown and tighten with a wrench. Two of the four casters provided are equipped with locks to prevent slippage of the keg on smooth surfaces such as hardwood floors, linoleum or tile. **These casters should be installed on the front of the unit.**
3. Once all four casters are attached, return the beer dispenser to an upright position and allow to remain for at least 8-10 hours. (See Note above.)

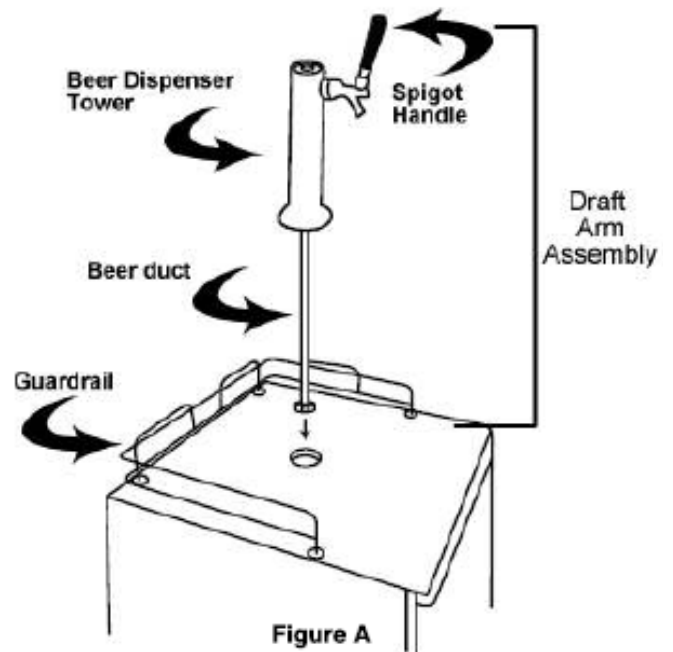


Figure A

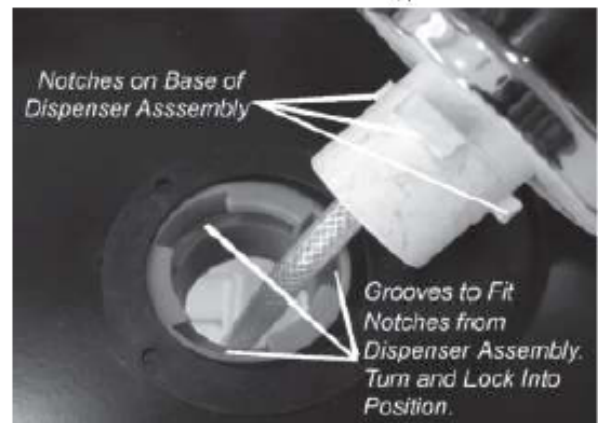


Figure B



Figure C

GUARDRAIL INSTALLATION

To install the guardrail,

1. Place the guardrail on top of the beer dispenser and line up the feet of the guardrail with the holes on top of the cabinet.
2. Using the screws provided, secure each foot to the cabinet.

BEER TAP INSTALLATION

To install the beer tap, first line up the draft arm notches with the notches in the hole in the top of the beer dispenser. Feed the arm into the hole, making sure that the notches are aligned properly. Slide arm down and twist until the arm is secure. (No screws or fasteners are necessary.)

While not required, we recommend the use of the black rubber gasket when installing the beer tap. using the gasket will provide a more secure seating for the arm assembly. (See figures A, B and C in the next column.)

BEER DISPENSER ASSEMBLY, continued

CO₂ REGULATOR INSTALLATION

Proper installation of your CO₂ regulator and a thorough understanding of CO₂ canisters are essential to the safe use of this product. Review and follow instructions for handling CO₂ cylinders and this section in particular to ensure your safety and the safety of others.

NEVER CONNECT A CO₂ CANISTER DIRECTLY TO THE UNIT! To avoid potential explosion that could result in grave injury or even death, ALWAYS CONNECT THE CANISTER TO THE CO₂ REGULATOR.

IMPORTANT! Your CO₂ canister is shipped to you **EMPTY** for safety reasons. You will need to get this canister filled before you can use your unit. In most areas, you can get canisters filled at:

- stores that sell kegs
- party stores or convenience stores
- fire and welding supply stores.

DO NOT ATTEMPT TO REFILL CO₂ CANISTERS YOURSELF!

DANGER! Carbon dioxide is a potentially dangerous gas. Canister or cylinders are under pressure and proper handling is essential to safety. ALWAYS HANDLE WITH CARE!

To install the dual-gauge regulator:

1. Insert the end of the CO₂ line with the green coupler onto the bottom end of the regulator. (See Figure D above and Photo 1, next page.) Secure line to regulator by tightening the green coupler.
 2. Next, insert the black rubber washer that comes with this unit into the attachment nut on the regulator (as shown in figure E).
 3. Connect the regulator to the canister by screwing the attachment nut onto the canister valve (see Figure F). Tighten with an adjustable wrench (not provided), but **DO NOT OVERTIGHTEN**.
 4. Secure the canister with the rubber restraining strap (on side of beer dispenser cabinet) as shown in Figure D. Be sure to situate the canister so that the gauges are easily readable and the shut-off valves are easily accessible.
- See following page for examples of correct connections.

SPECIAL PRECAUTIONS: Ensure that the safety devices for your pressurized system are installed and remain installed. Once installed, **NEVER** remove the rubber washers in the regulator attachment nut to the canister or in the tap mechanism. **NEVER** bypass these safety features.

Failure to comply will void your warranty and could result in serious injury or death!

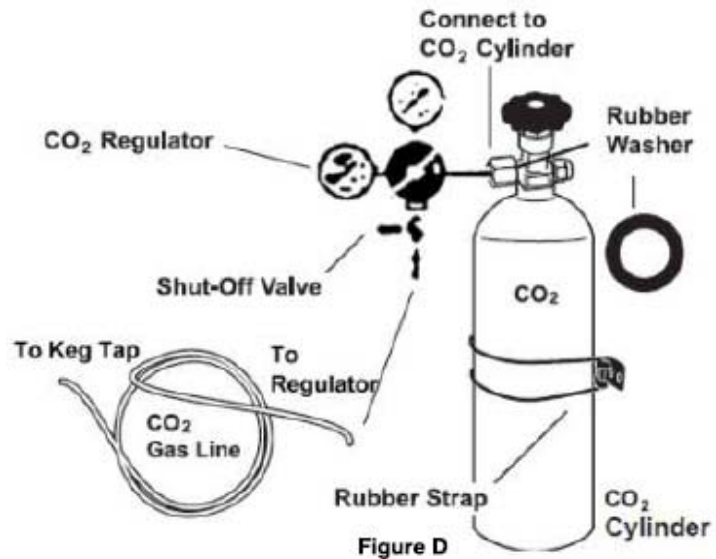


Figure E



Figure F

BEER DISPENSER ASSEMBLY, continued

CO₂ REGULATOR & TAP CONNECTION EXAMPLES

PLEASE NOTE: Your CO₂ hose comes equipped and assembled with coupling connections for the regulator (green coupler) and the tap connection (silver coupler). The photos below show correct connections.



Photo1



Photo2



Photo3

HOW TO TAP A BEER KEG

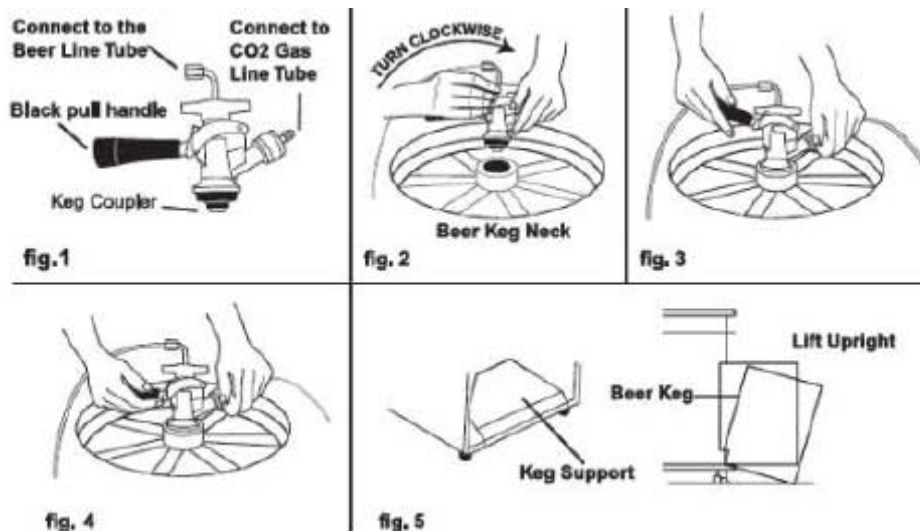
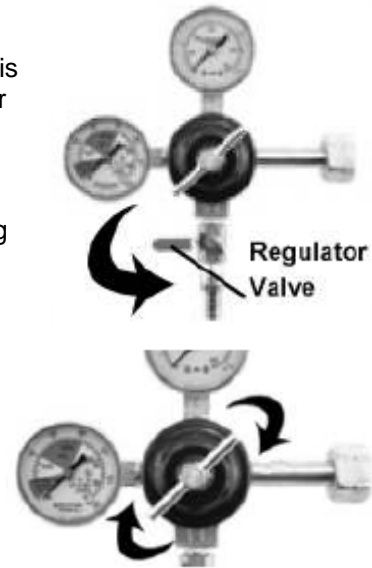
INSTALLING KEG TAP ON SINGLE BARREL TYPE KEG

This beer dispenser's coupler is compatible with a 1/4 pony keg sized barrel and a 1/2 barrel full size (U.S.A.). The beer dispenser is capable of holding a 5-gallon cornelius keg and a 5-gallon D system keg. You may find that you will need to use an alternate keg coupler.

Your CO₂ canister has a capacity of 2.5 lbs, which will deliver approximately four 15-gallon kegs of beer.

To tap a keg:

1. First be sure that the black dispenser handle of the keg coupler is closed (pushed up, see Fig. 1 below). Also, make sure the tower dispenser (on top of beer dispenser) handle is closed before proceeding with tap-to-keg connection.
2. Insert the keg coupler mechanism into the top of the keg neck and perform a quarter-turn clockwise to lock the coupler and keg together (Fig. 2).
3. Before proceeding, make sure that you insert a black rubber washer into the wing nut connector for the beer line (see page 7, bottom photo) before connecting the line to the tap. Take off the black protective cap from the tap and screw the wing nut with the washer to a firm finger-tightness.
4. Insert the end of the CO₂ line with the silver couple to the CO₂ connection on the tap. Make sure the coupler connection is secure. Next, secure the connection between the beer line and tap with pliers (Fig. 3 and Photo 2, previous page). **Make sure there are no leaks.**
5. To finalize the connection, pull the black tap handle out and push down until it clicks securely. There will be an audible click, signaling that the CO₂ and beer connections have been opened and that your keg is tapped (Fig. 4). Now you may open the regulator valve (top right photo) and open the valve on the CO₂ tank itself as well. Set the regulator to read 10-12 psi by turning the regulator handle (bottom photo, right) clockwise.
6. Carefully tilt the keg onto the lip of the cabinet (using the keg support shown in Fig. 5) and position slowly into the cabinet body until the door can close. **HANDLE CAREFULLY.** Do not jostle or bang keg on CO₂ canister.



OPERATION, MAINTENANCE & STORAGE

USING YOUR BEER DISPENSER

1. First be sure that you are connected safely to the proper power supply: a 120V, 60Hz, 16 Amp grounded AC outlet. The cord should be rated for **AT LEAST 1875 Watts and a No. 14 AWG minimum size**.
2. Slide the drip tray beneath the spigot to catch excess beer, then pull the tower handle toward your body to open the tap and dispense beer.
3. To pour beer with a proper head of foam, tilt the glass at a 45 degree angle until approximately 2/3 full, then straighten the glass and finish pouring beer.

Note: If beer does not dispense, check previous sections on regulator hookup and tapping the keg.

If your beer is running too slowly, adjust the pressure on the regulator judiciously (**DO NOT EXCEED 12 PSI**).

Condensation on the spigot or tap is normal.

STORING YOUR BEER DISPENSER

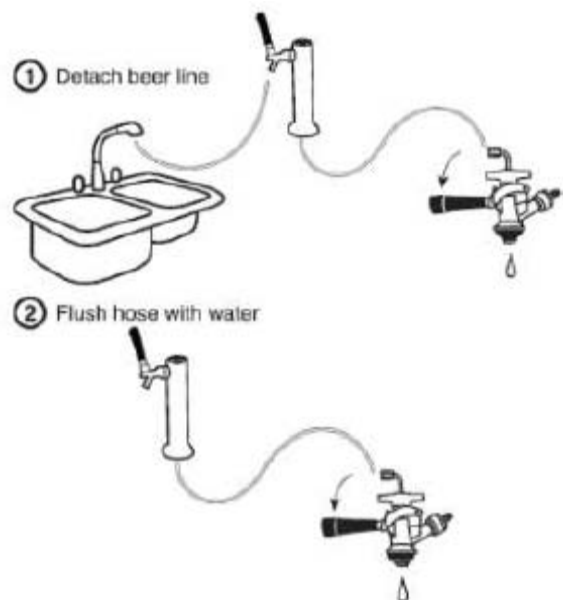
1. To prevent ice buildup on the inside of the cabinet, set the temperature control to MID or LOW if you live in a cold area. This unit does not self-defrost. The temperature control is located inside the beer dispenser.
2. If you do not expect to use your beer dispenser for an extended period of time, rinse the beer line to prevent mold or bacterial buildup which could cause illness.
3. Never use sharp objects in your beer dispenser. If you are storing your machine, be sure to prevent children from playing in or around the unit.

DANGER! Children can become trapped in an unsecured and unsupervised environment.

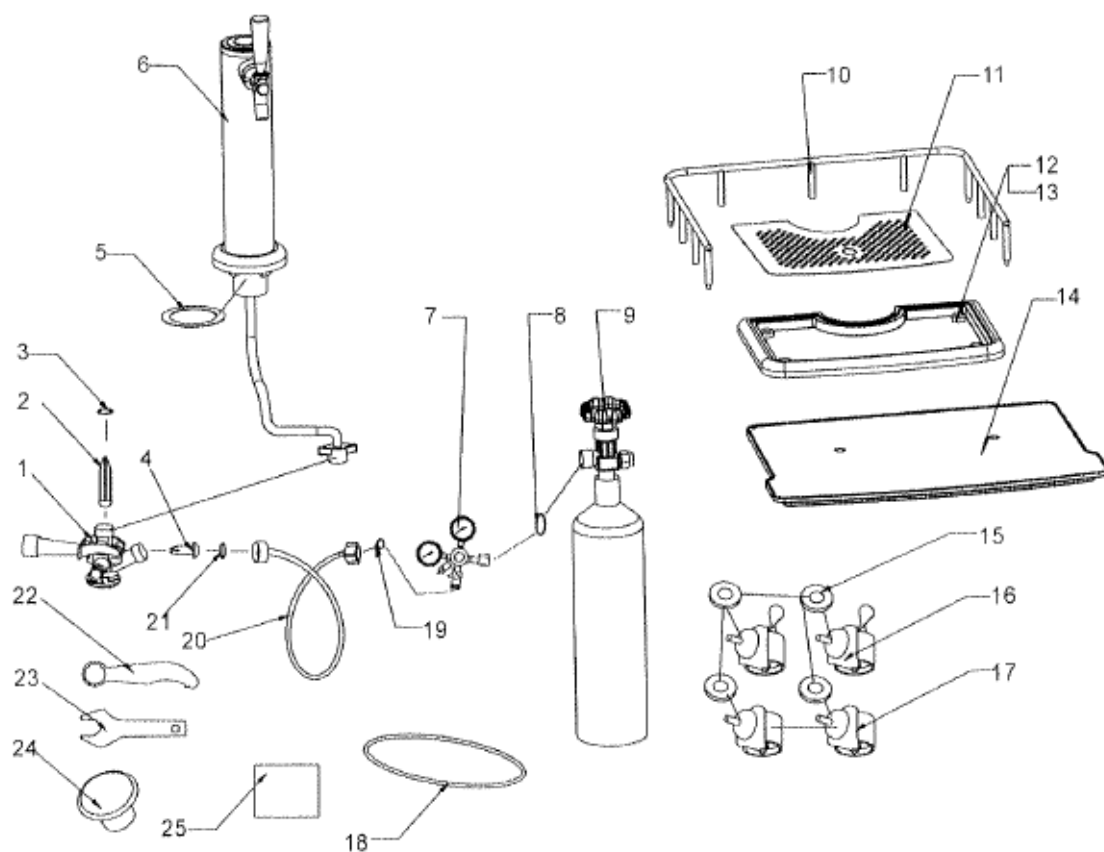
CLEANING AND MAINTENANCE

To clean the lines and tap, first:

1. **TURN OFF THE CO₂.**
2. Next, wipe the outside of the machine, clean drip tray and around guardrail. Clean the inside of the cabinet by wiping with a damp cloth. Clean gasket on door to help eliminate trapped, spilled beer which could produce mold and mildew.
3. Disconnect the beer hose from the tap coupler and twist dispenser faucet carefully off the top of the beer dispenser.
4. Set the dispenser handle to the open or down position before flushing, then position the faucet over a sink and hold the beer line under running water for approximately 5 minutes, allowing the water to flush out the faucet head. This will also help eliminate trapped, spilled beer which could produce mold and mildew.
5. Reconnect beer line and dispenser faucet when done or leave disconnected if you plan to store for a long period.



ACCESSORIES



ACCESSORIES	QUANTITY	ACCESSORIES	QUANTITY
1. KEG COUPLER	1	14. KEG BASE BOARD	1
2. BACK FLOW STOPPER	1	15. METAL WASHER	4
3. RUBBER WASHER	1	16. KEGORATOR CASTERS BRAKE	2
4. CO2 RUBBER DIRECTIONAL WASHER	1	17. KEGORATOR CASTERS	2
5. BEER TOWER WASHER	1	18. CO2 TANK STRAP	1
6. BEER TOWER TAP/BEER HOSE ASSEMBLY	1	19. AIR HOSE WING NUT WASHER	1
7. CO2 REGULATOR	1	20. AIR HOSE	1
8. HIGH PRESSURE WASHER	1	21. AIR HOSE CONNECTOR WASHER	1
9. CO2 TANK VALVE	1	22. BEER TAP WRENCH	1
10. GUARD RAIL	1	23. REGULATOR WRENCH	1
11. DRIP PAN TOP	1	24. BEER TOWER HOLE COVER	1
12. DRIP PAN	1	25. EXTRA WASHERS (3, 4, 8, 19, 21)	1
13. RUBBER FOOT	4		

LIMITED WARRANTY

ONE-YEAR LIMITED WARRANTY

Within the 48 contiguous United States, for one year from the date of purchase, when this appliance is operated and maintained according to instructions attached to or furnished with the product, warrantor will pay for factory-specified parts and repair labor to correct defects in materials or workmanship. Service must be provided by a designated service company. Outside the 48 states, all parts are warranted for one year from manufacturing defects. Plastic parts, shelves and cabinets are warranted to be manufactured to commercially acceptable standards, and are not covered from damage during handling or breakage.

5-YEAR COMPRESSOR WARRANTY

1. The compressor is covered for 5 years.
2. Replacement does not include labor.

ITEMS WARRANTOR WILL NOT PAY FOR:

1. Service calls to correct the installation of your appliance, to instruct you how to use your appliance, to replace or repair fuses or to correct wiring or plumbing.
2. Service calls to repair or replace appliance light bulbs or broken shelves. Consumable parts (such as filters) are excluded from warranty coverage.
3. Damage resulting from accident, alteration, misuse, abuse, fire, flood, acts of God, improper installation, installation not in accordance with electrical or plumbing codes, or use of products not approved by warrantor.
4. Replacement parts or repair labor costs for units operated outside the United States.
5. Repairs to parts or systems resulting from unauthorized modifications made to the appliance.
6. Expenses for travel and transportation for product service in remote locations.
7. The removal and reinstallation of your appliance if it is installed in an inaccessible location or is not installed in accordance with published installation instructions.

DISCLAIMER OF IMPLIED WARRANTIES; LIMITATION OF REMEDIES

CUSTOMER'S SOLE AND EXCLUSIVE REMEDY UNDER THIS LIMITED WARRANTY SHALL BE PRODUCT REPAIR AS PROVIDED HEREIN. IMPLIED WARRANTIES, INCLUDING WARRANTIES OF MERCHANTABILITY OR FITNESS FOR A PARTICULAR PURPOSE, ARE LIMITED TO ONE YEAR. WARRANTOR SHALL NOT BE LIABLE FOR INCIDENTAL OR CONSEQUENTIAL DAMAGES. SOME STATES DO NOT ALLOW THE EXCLUSION OR LIMITATION OF INCIDENTAL OR CONSEQUENTIAL DAMAGES, OR LIMITATIONS ON THE DURATION OF IMPLIED WARRANTIES OF MERCHANTABILITY OR FITNESS, SO THESE EXCLUSIONS OR LIMITATIONS MAY NOT APPLY TO YOU. THIS WARRANTY GIVES YOU SPECIFIC LEGAL RIGHTS AND YOU MAY ALSO HAVE OTHER RIGHTS, WHICH VARY FROM STATE TO STATE.

WARNING! This product may contain chemicals known to the state of California to cause cancer or birth defects or other reproductive harm. For more information, visit: www.summitappliance.com/prop65

Chemicals known by the manufacturer to be present in this product in concentrations higher than threshold limits: NONE.

FELIX STORCH, INC.
770 Garrison Avenue
Bronx, NY 10474
Phone: (718) 893-3900
Fax: (718) 842-3093
www.summitappliance.com



For parts and accessory ordering,
troubleshooting and helpful hints, visit:
www.summitappliance.com/support