



## Panel Installation Instructions

For 15" Series PNR Models

Models: SCR1536BGNR

### Parts included in PNR Kit:

- (1) Replacement top hinge
- (1) Replacement bottom hinge
- (2) Plastic bushing for panel
- (2) Washers
- (2) Self-tapping screws for kickplate

#### Panel/Frame Dimensions:

Exterior: 14 9/16" W x 29 7/8" H

Frame Width: minimum 1 3/4"

Overlay panel thickness: minimum 3/4" thick

Lock diameter: 5/8"

### Remove the door from the unit

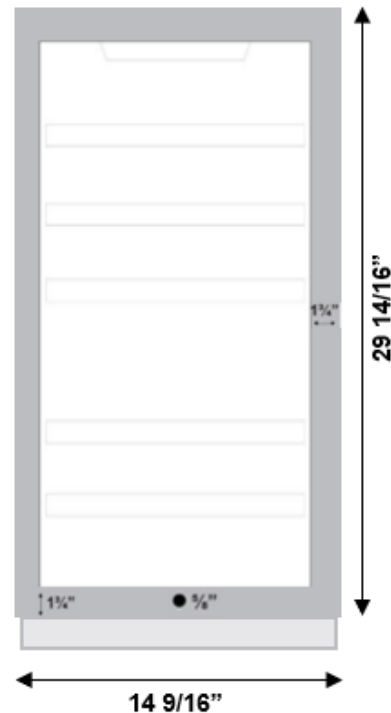
1. Remove the door from its chassis by unscrewing the top and bottom hinges from the cabinet and door. Save all the screws for Step 11.

### Attach the panel & handle

2. Attach your door handle to the panel using countersunk screws (not included). You can use the handle that ships with this appliance or substitute your own.
3. Pull out the rubber gasket located around the inner door frame to access the four drilled screw holes made to accommodate the door handle on both the left and right sides of the frame.
4. Place your custom panel over the frame.
5. Hold the panel in place from the front, then use an appropriate screw to secure it to the door frame from the inside of the door.
6. Reinstall the gasket to its original position.

### Reattach the door

7. You will have to drill a hole at into the top and bottom of the custom panel in order to connect it to the new provided hinges. To do this, line the door up in its final position, using the new hinges as a guide to mark where you will be drilling the holes. Drill a hole through the top and bottom of the custom panel, using a 23/64" drill bit.
8. Insert the provided bushing into the top and bottom holes of the panel.
9. Drill a 5/8" minimum keyhole in the door frame, as illustrated above.
10. Remove the two screws holding the kickplate in on the hinged side.
11. You can now reinstall the door using the replacement hinges.
12. Secure the hinge with the provided self-tapping screws.



If you need help with your installation call our Customer Service facility at **800-932-4267 (Ext. 513)** between 9:00 AM and 5:00 PM ET or visit our website [summitappliance.com/support](http://summitappliance.com/support) at any time. We will do our best to answer your questions.

To order replacement parts, visit our website: [summitapplianceparts.com](http://summitapplianceparts.com)