

The USB Temperature Logger from Summit Accucold® is designed to record refrigerator or freezer temperatures to any USB flash drive for display and analysis on a PC. Using NIST traceable probes, the Temperature Logger measures and saves the temperature readings in 15-minute intervals. When ready to see the results, just plug the flash drive into your PC or Mac and transfer the data to Microsoft Excel, where you can graph, chart or print the data in whatever format you require. A reusable 2GB flash drive with 6 months of storage capacity is included with the Summit Accucold® Temperature Logger.

QUICKSTART

You will need:



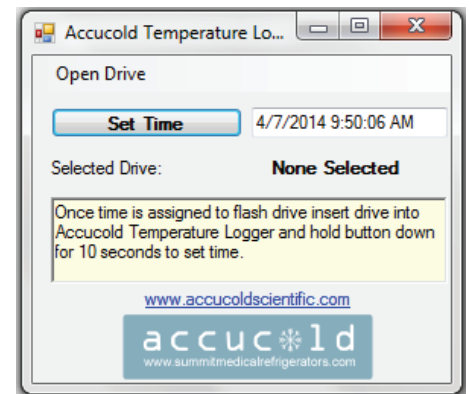
PC OR MAC



ACCUCOLD FLASH DRIVE &
TEMPERATURE LOGGER

Initial Setup – Setting the time:

1. Insert the supplied flash drive into your computer.
2. Go to **MY COMPUTER** and locate the drive labeled **ACCUCOLD**.
3. Launch the **ACCUCOLD PROGRAM**.
4. Select **OPEN DRIVE** to tell the program the location of the Accucold drive.
5. Select the Accucold drive from the drive list.
6. Once the drive is selected, click on the **SET TIME** button to save the date and time settings to the Accucold flash drive.
7. You will be instructed to insert the flash drive into the Temperature Logger and hold the white button down for 10 seconds.
8. When the LED flashes a second time (after 10 seconds has elapsed), the time will be set.
9. The Logger will automatically begin recording temperature every 15 minutes.



ACCUCOLD PROGRAM

CONTINUE TO PRODUCT USE AND MAINTENANCE ►

PRODUCT USE AND MAINTENANCE

Using the Temperature Logger

Viewing the log files:

1. Stop recording by holding the white button down for 1 second. The LED will flicker and then remain on steady to indicate recording has stopped.

Important: To prevent loss of data, do not remove drive without following this procedure.

2. It is now safe to remove the flash drive.
3. Insert the flash drive into your computer and navigate to the drive labeled Accucold.
4. Open the file labeled #.csv (i.e., 0.csv or other) in Excel or other CSV-compatible spreadsheet program.

Note: If you wish to continue recording data after viewing the files, you can re-insert the flash drive into the Logger, but DO NOT hold down the white button.

Charting the data in Excel:

Simply select all three columns (Date, Time, Temperature) and use the Charting Wizard to create the graph of your choice.

Maintenance

Clearing the flash drive:

The flash drive supplied with the Temperature Logger has enough memory to save 6 months of data. When the flash drive is full, the light on the Logger will be on steady rather than blinking. To clear the drive, remove it. (If the light on the Logger is blinking, remember to hold the white button down for 1 second until the light flickers and then is on steady before removing the flash drive.) Insert the flash drive into your computer, and either erase the drive or save the data onto your hard drive (or elsewhere) if you wish to preserve it.

Battery replacement:

To prevent data loss, change the battery in the Temperature Logger at least once a year. You will need a 3-volt CR2032 coin cell. Remove the old battery and set the new one into place, being sure that the polarity orientation is correct.

Technical Data

The accuracy of the Accucold® Temperature Logger is as follows:

From -25°C to 8°C: 1°C (-13°F to 46.4°F: 1.8°F)

From -30°C to -25°C: 1.5°C (-22°F to -13°F: 2.7°F)

Troubleshooting

If light is on steady

A steady light indicates that the device has stopped recording. This can occur if the drive has run out of space or if the drive is not fully reinserted after a drive removal. Make sure that the drive is inserted all the way. It will take 20 seconds for the device to start recording again, indicated by the light flashing every second.

If Time is wrong

Time may not have been set. If log time starts at 12:00 AM, January 1st, 2000, the time has not been set. See Quickstart guide for time-setting instructions.

If Temperatures are wrong

Check connection to probe. Values under -100 degrees or non-numerical values indicate that the probe is not connected.

If light is off

This can indicate a power loss to the data logger. Check the connection at the rear of the unit. If it is connected, then check the power to the refrigerator. The temperature logger is powered from the unit itself, and if power is lost to the unit, the temperature logger will also lose power. When power is restored, the power loss event will be recorded and you can determine how long power has been out.

If power is restored to unit but time reads 12:00 AM, January 1st, 2000

The battery needs to be replaced. (See Maintenance.)

WARRANTY

Within the 48 contiguous United States, for 90 days from the date of purchase, when this appliance is operated and maintained according to instructions furnished with the product, warrantor will pay for factory-specified parts and repair labor to correct defects in materials or workmanship. Service must be provided by a designated service company. Outside the 48 states, all parts are warranted for 90 days from manufacturing defects. Plastic parts are warranted to be manufactured to commercially acceptable standards, and are not covered from damage during handling or breakage. Warrantor will not pay for damage resulting from accident, alteration, misuse, abuse, fire, flood, acts of God, improper installation, installation not in accordance with electrical codes, or use or modifications of products not approved by warrantor.

WWW.MEDICALREFRIGERATORS.COM

ACCUCOLD DIVISION | FELIX STORCH, INC. 770 GARRISON AVENUE, BRONX, NY 10474 USA TEL 800-932-4267 FAX 718-842-3093