



FF1142PL



66.75" x 23.5" x 25.5" (H x W x D)

ENERGY STAR-certified 24" wide 11.5 cu.ft. top mount frost-free refrigerator-freezer in a stainless steel look

Highlights:

ENERGY STAR-qualified performance ensures annual savings

Over 11 cu.ft. of interior storage in a slim-fitting footprint

True frost-free operation saves you maintenance by preventing icy buildup

Product Features:

| | |
|-------------------------------|---|
| 24" wide refrigerator-freezer | Made with a 24" footprint that offers full storage capacity in a uniquely slim fit |
| ENERGY STAR-certified | Rated by the DOE to perform with more efficiency than federal standards require, saving your unit energy and you on higher utility costs |
| Frost-free operation | No-frost convenience for reduced user maintenance |
| Thin-line design | Limited space is no problem for our thin-line models, designed specifically for those hard-to-fit spots |
| Large capacity | 11.5 cu.ft. interior offers generous storage in a slim fit |
| Stainless steel look | Doors offer the look of stainless steel complete with a vertical grain, but the easier cleanability of a fingerprint-resistant steel finish |
| Adjustable glass shelves | Rearrange your refrigerator space to accommodate all shapes and sizes or remove shelves for a simple clean-up |
| Crisper drawer | Get the longest life and best taste out of produce by storing it in a convenient slide drawer |
| Door storage | Multiple door shelves in both the refrigerator and freezer compartments offer convenient storage for condiments and bottles |



FF1142PL Specifications:

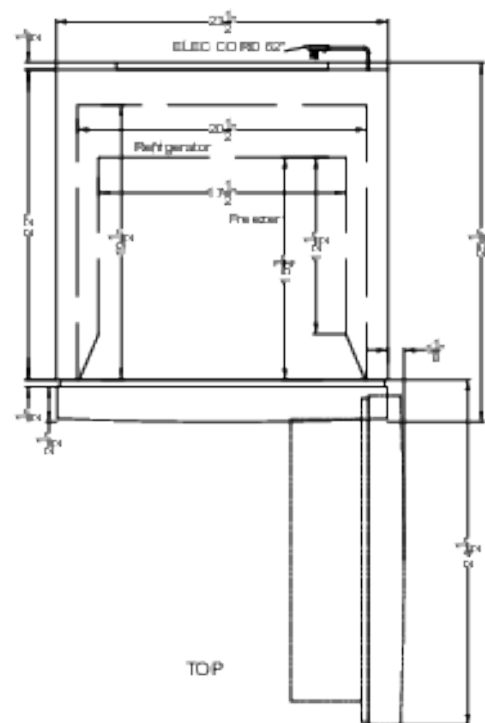
Overview

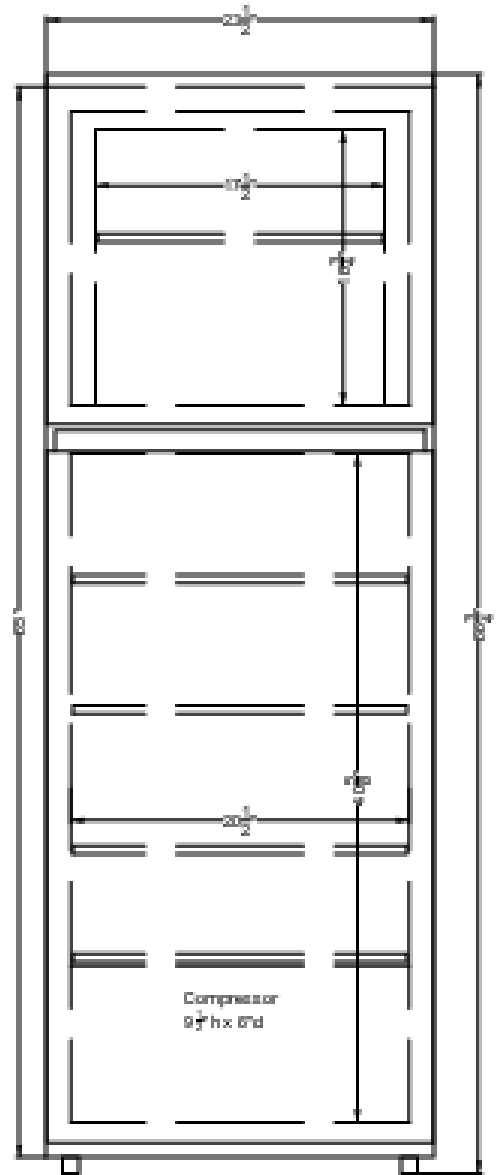
| | |
|----------------------------|---------------------|
| Height of Cabinet | 66.75" (170 cm) |
| Width | 23.5" (60 cm) |
| Width with Door Open | 24.63" (63 cm) |
| Depth | 25.5" (65 cm) |
| Depth with door at 90° | 50.0" (127 cm) |
| Capacity | 11.5 cu.ft. (326 L) |
| Defrost Type | Frost-Free |
| Door | Stainless Look |
| Cabinet | Gray |
| US Electrical Safety | CSA |
| Canadian Electrical Safety | CSA-C |
| Energy Usage/Year | 308.0kWh/year |
| Amps | 2.5 |
| Voltage/Frequency | 115 V AC/60 Hz |
| Weight | 121.0 lbs. (55 kg) |
| Shipping Weight | 157.0 lbs. (71 kg) |
| Parts & Labor Warranty | 1 Year |
| Compressor Warranty | 5 Years |
| UPC | 761101103600 |

Refrigerator-Freezer

| | |
|----------------------------------|-----------------|
| Door Swing | RHD |
| Reversible | Yes |
| Adjustable Shelves | Yes |
| Crisper Qty | 1 |
| Crisper Finish | Transparent |
| Crisper Cover | Plastic |
| Interior Light | Yes |
| Refrigerator - Interior Height | 40.63" (103 cm) |
| Refrigerator - Interior Width | 20.5" (52 cm) |
| Refrigerator - Interior Depth | 19.5" (50 cm) |
| Refrigerator - Shelf Type | Glass |
| Refrigerator - Shelf Qty | 3 |
| Refrigerator - Full Door Shelves | 3 |
| Freezer - Interior Height | 16.75" (43 cm) |
| Freezer - Interior Width | 17.5" (44 cm) |

| | |
|-----------------------------|----------------|
| Freezer - Interior Depth | 15.75" (40 cm) |
| Freezer - Shelf Type | Glass |
| Freezer - Full Door Shelves | 2 |
| Thermostat Type | Dial |
| Refrigerant Type | R600a |
| Refrigerant Amount | 1.2 oz. |
| High Side PSI | 250.0 |
| Low Side PSI | 88.0 |
| Level Legs | 2 |
| Interior Height - Drawer 1 | 9.5" (24 cm) |
| Interior Width - Drawer 1 | 20.5" (52 cm) |
| Interior Depth - Drawer 1 | 16.0" (41 cm) |
| Compressor Step Height | 9.5" (24 cm) |
| Compressor Step Width | 20.5" (52 cm) |
| Compressor Step Depth | 6.0" (15 cm) |
| Sound Level | 32.6 dB |





FRONT