



DW185SSADA



32.25" x 17.5" x 22.5" (H x W x D)

18" wide ADA compliant built-in dishwasher made in Europe with a stainless steel door and top controls

Highlights:

18" wide for an easy fit in space-challenged kitchens

Designed with a 32 1/4" height to fit under lower ADA compliant counters

Advanced sound absorption technology for quiet operation at 47 dB

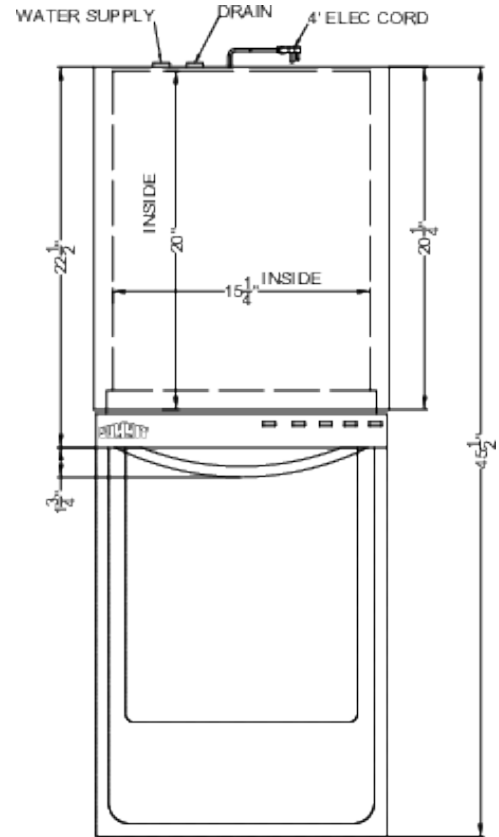
Product Features:

18" Wide Dishwasher	Slim fit with full dishwashing capability for a great addition to any small kitchen
ADA compliant	32.25" high to fit under lower counters following ADA guidelines
Ultra quiet performance	Advanced sound absorbing construction operates at 47 dB
Touch controls	Intuitive button controls with a digital display to ensure you select the proper cycle
Top control panel	Touch controls are located on the top of the door, providing a cleaner look to better integrate into your kitchen
Stainless steel door	Attractive finish with a horizontal grain
Pro style handle	Curved handle in brushed stainless steel elevates your kitchen style
Stainless steel interior	Durable interior ensures long-lasting use
Slide-out nylon coated wire racks	Two easy-gliding racks for easy loading and long-lasting durability

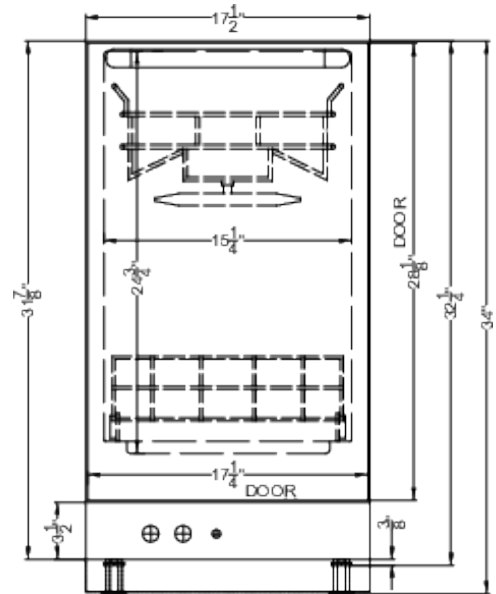


DW185SSADA Specifications:

Overview	
Height of Cabinet	32.25" (82 cm)
Width	17.5" (44 cm)
Depth	22.5" (57 cm)
Depth with Handle	24.25" (62 cm)
Depth with door at 90°	45.5" (116 cm)
Dishwasher	Standard
Door	Stainless Steel
Cabinet	Stainless Look
US Electrical Safety	UL
Canadian Electrical Safety	ULC
Energy Usage/Year	250.0kWh/year
Amps	12.0
Voltage/Frequency	115 V AC/60 Hz
Weight	95.0 lbs. (43 kg)
Parts & Labor Warranty	1 Year
UPC	761101089379
Dishwasher	
Number of Cycles	8
Number of Racks	2
Rack Material	Wire
Silverware Basket	Yes
Delayed Start	Yes
China Setting	Yes
Interior Finish	Stainless Steel
Interior Height	24.75" (63 cm)
Interior Width	15.25" (39 cm)
Interior Depth	20.0" (51 cm)
Decibel Rating	47.0 dBA
Number of Options	8
Leveling Legs	Yes
Place Settings	8



TOP VIEW



FRONT VIEW