



SPR489OSADA



32.5" x 19" x 17" (H x W x D)

ADA compliant commercially approved outdoor beverage cooler for built-in or freestanding use with a shallow 17" depth, seamless stainless steel door trim, glass door, front of unit lock, and dial thermostat

Highlights:

32.5" height for use under most lower ADA compliant counters

Designed and constructed for safe use in the outdoors

17" shallow depth makes it ideal for smaller commercial and residential settings

Product Features:

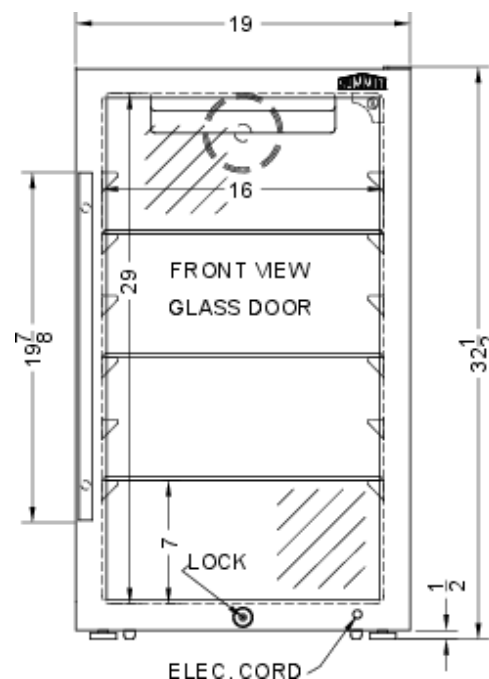
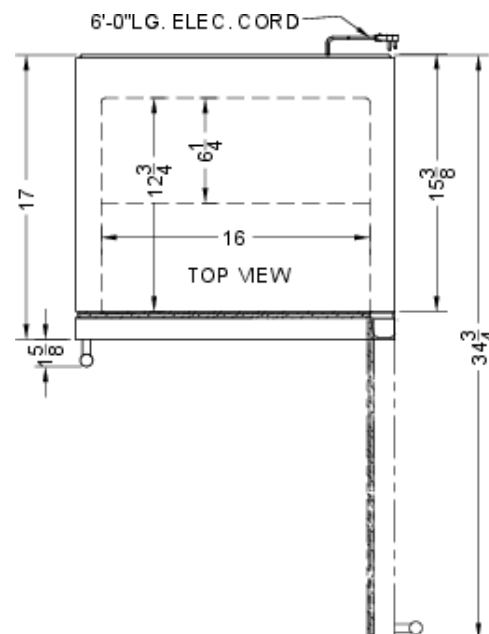
Built-in capable	Make the best use of space by installing your refrigerator under the counter
ADA compatible height	Sized at 32.5" high for installation under most lower ADA compliant counters
17" shallow depth	Ideal for home wet bars, island kitchens, and other applications with limited footprint space
Weatherproof design	Approved for use in the outdoors, with a sealed exterior and double pane tempered glass door
Commercially approved	ETL-S listed to NSF-7 standard and meets UL-471 for use in commercial settings
Double pane tempered glass door	Heat resistant design provides clear view of stored products, with an elegant trim in seamless stainless steel
Automatic defrost	Reduced user maintenance with auto defrost system
Reversible door	User-reversible door swing makes it easy to adjust to your setting as needed
Factory installed lock	Keyed lock offers added security, with two keys included



Sound Level 32.6 dB

Dimensions

Interior Height	29.0" (74 cm)
Interior Width	16.0" (41 cm)
Interior Depth	12.75" (32 cm)
Compressor Step Height	7.0" (18 cm)
Compressor Step Width	16.0" (41 cm)
Compressor Step Depth	6.25" (16 cm)



Refrigerator Features

Door Swing	RHD
Reversible	Yes
Shelf Type	Glass
Shelf Qty	3
Adjustable Shelves	Yes
Can Storage	Yes
Thermostat Type	Dial
Fan Type	Interior
Refrigerant Type	R600a
Refrigerant Amount	0.88oz.
High Side PSI	320.0
Low Side PSI	120.0
Level Legs Qty	2
Interior Light	Yes
Temperature Range	34 to 50°F